



The Best of Both Worlds (Part 1 of 4)



By Jerry Work



Editor's Note: This is part 1 of a 4 part article on using a combination of lead-acid and lithium-ion batteries for the house battery bank in your bus.

This method describes how to add lithium battery power to your bus at half the cost and without abandoning the life remaining in your existing lead-acid house battery bank.

When working with lead-acid batteries, always wear proper eye protection and remember to wear old clothes, lest you spill battery acid on them and destroy them.

I also recommend that you take photos of your wiring, of the "before" setup so you can look back at your previous setup if you ever need to.

The RV world is abuzz with articles and presentations, including a number I have done in the past, about the significant benefits derived from replacing your current lead-acid house batteries with lithium-ion batteries.

You are promised far greater capacity per unit of weight and size, five to ten times longer life, higher voltages to extend the useful life of your 120VAC appliances powered through an inverter and the ability to fully discharge the lithium batteries without long term damage, along with many other benefits.

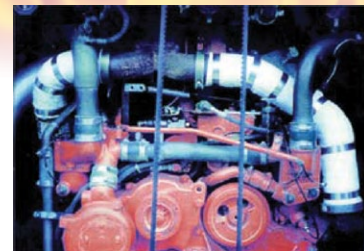
The issue for many of you is that these benefits

come at a very high price. The upfront investment for lithium-ion batteries can be thousands of dollars and you give up whatever life remains in your existing lead-acid batteries, but you don't need to do that!

EHP

Engine Heat Protection

Reduce that unwanted heat with
EHP Wet Blanket exhaust insulation



EHP Wet Blanket is a 1/4-inch thick ceramic-based material used for insulating underhood components from heat. Usable in temperatures up to 3200 degrees Fahrenheit, the blanket is wrapped around the heat source, such as exhaust pipe and reduces its radiating temperature by half. It contains no asbestos. Easy to install - complete instructions.

39250 Green Meadow Road, Temecula, CA 92592

(951) 302-2212

EngineHeatProtection.com